

Ecology Journal Style Guide for Biology Thesis Students

General guidelines ([esajournals.onlinelibrary.wiley.com/hub/journal/10.1002/\(ISSN\)1939-9170/resources/author-guidelines-ecy.html#Accepted_Manuscripts](http://esajournals.onlinelibrary.wiley.com/hub/journal/10.1002/(ISSN)1939-9170/resources/author-guidelines-ecy.html#Accepted_Manuscripts)): When in doubt, consult your thesis advisor and look at recently published articles in the journal *Ecology* at [esajournals.onlinelibrary.wiley.com/hub/journal/10.1002/\(ISSN\)1939-9170](http://esajournals.onlinelibrary.wiley.com/hub/journal/10.1002/(ISSN)1939-9170)

Literature cited (bibliography)

- The first author's last name is followed by the author's initials; all subsequent authors' names begin with their initials; put a space between first and middle initials, and put a comma after the last initial's period; for 10 or more authors, only list the first and follow it with a comma and "et al." without quotes.
 - Only the first word of the article title and proper nouns in the article title are capitalized.
 - Books: Place of publication includes city, state or province, and country. Only the country is abbreviated. The number of an edition is optional.
 - The bibliography is labeled Literature Cited, which is centered.
- References have hanging indents; line spacing is single, no lines between references.

Literature Cited

- Boeing, J. 2015. Ant diversity in the urban mosaic. Senior thesis, Lake Forest College, Lake Forest, IL, USA. LFC thesis
- Cramp, S., and K. E. L. Simmons, editors. 1983. Handbook of the birds of Europe, the Middle East and North Africa. The birds of the western Palearctic. Volume III. Waders to gulls. Oxford University Press, Oxford, UK. Book with volume number & unique title
- Dangles, O., M. O. Gessner, F. Guerold, and E. Chauvet. 2004a. Impacts of stream acidification on litter breakdown: implications for assessing ecosystem functioning. *Journal of Applied Ecology* 41:365–378. 2 articles with same author and date
- Dangles, O., B. Malmqvist, and H. Laudon. 2004b. Naturally acid freshwater ecosystems are diverse and functional: evidence from boreal streams. *Oikos* 104:149–155. Chapter in an edited book
- Forster, M., and E. Sober. 2004. Why likelihood? Pages 153–165 in M. L. Taper and S. R. Lele, editors. *The nature of scientific evidence*. University of Chicago Press, Chicago, Illinois, USA.
- Ison, J. L. 2010. Pollination of *Echinacea angustifolia*: effects of flowering phenology and spatial isolation. Ph.D. dissertation. University of Illinois, Chicago, IL, USA. PhD thesis
- Mitsch, W. J., and J. G. Gosselink. 1993. *Wetlands*. Second edition. Van Nostrand Reinhold, New York, New York, USA. Book edition other than the first
- R Core Team. 2014. R: a language and environment for statistical computing. R Foundation for Statistical Computing, Vienna, Austria. <http://www.R-project.org> Website
- Tauber, E., et al. 2007. Natural selection favors a newly derived timeless allele in *Drosophila melanogaster*. *Science* 316:1895–1898. Journal article with 10 or more authors
- Wasserman, T. N., S. A. Cushman, D. O. Wallin, and J. Hayden. 2012. Multi scale habitat relationships of *Martes americana* in northern Idaho, USA. Research Paper RMRSRP-94. USDA Forest Service, Rocky Mountain Forest and Range Experimental Station, Fort Collins, Colorado, USA. http://fs.fed.us/rm/pubs/rmrs_rp094.pdf Report
- Weber, B. 2011. Lynn Margulis, evolution theorist, dies at 73. *New York Times* 24 November. <http://www.nytimes.com/2011/11/25/science/lynn-margulis-trailblazing-theorist-on-evolution-dies-at-73.html> News article

In-text citations

- One author: (Boeing 2015:31). In this example, a direct quote was made from page 31 of the source.
- Two authors: (Cramp and Simmons 1983). In this example, they are editors.
- Three or more authors: (Dangles et al. 2004a). In this example, the lower case, italicized letter *a* indicates that this is the first of two or more sources published by the same author in the same year that you cited.

Figures

- Specifications: <http://esapubs.org/esapubs/preparation.htm#III>
- Below the figure, begin its legend with the abbreviation Fig. followed by a space, the figure's number, a period, 5 spaces and a sentence or two describing the figure.
- Refer to the figure in the text of your thesis as Fig. and the number:

On data points across the range of the intended regression. An example of a relationship (Palomäki and Paasivirta 1993) included by Mittelbach et al. (2001) and classified as unimodal that violates the condition of reasonable scatter is presented in Fig. 1.

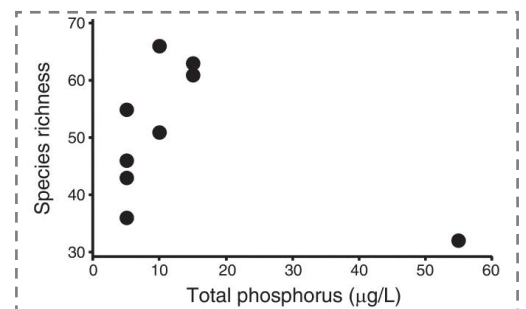


FIG. 1. An example of data classified as unimodal by Mittelbach et al. (2001) using general linear models regression and the MOS test. The large gap in the data between 15 and 55 µg/L P invalidates the use of regression, and interpolation of unimodality is based on a single outlier. Data obtained from the data table published in Palomäki and Paasivirta (1993) ($n = 11$ samples).

See this figure and the text referring to it on page 2245 of this article:

Cusens, J., S. D. Wright, P. D. McBride, and L. N. Gillman. 2012. What is the form of the productivity–animal–species–richness relationship? a critical review and meta-analysis. *Ecology* 93:2241–2252.

Tables

- Tables should be created from data gathered by the thesis author rather than copied from published works.
- See specifications at <http://esapubs.org/esapubs/preparation.htm#Tab>
- Above the table put the word Table followed by a space, the number of the table, a space, a period, 5 spaces, and then the title of the table. Capitalize only the first word of the table title and any proper nouns. Use a hanging indent if the title is more than one line.
- Put explanatory notes below the table, beginning with the word *Notes* and a colon in *italics*, followed by any necessary explanations of symbols, terms, values, etc.

TABLE 3. Results of the community similarity analysis (Horn-Morisita index) between the different plot treatments.

Treatments	NR	SD	SP
AR	0.94	0.64	0.84
NR		0.56	0.76
SD			0.66

Notes: Numbers close to 1 indicate high similarity in terms of species composition and species equitability. Treatments: AR, artificial bat roost plots ($n = 8$); NR, natural bat roost plots ($n = 14$); SD, same-diameter tree plots ($n = 14$); SP, same-species tree plots ($n = 14$).

- Refer to the Table in the text of your thesis as Table and the number:

Fig. 10]. In addition to the increased *Piper* diversity, plots with a bat roost were similar in *Piper* species composition and relative abundances (Table 3). In contrast, plots without roosts showed relatively low

See this table at the bottom of page 2449 and the text referring to it on page 2447, second column, under Results, bottom of the first paragraph of this article:

Salazar, D., D. H. Kelm, and R. J. Marquis. 2013. Directed seed dispersal of *Piper* by *Carollia perspicillata* and its effect on understory plant diversity and folivory. *Ecology* 94:2444–2453.

Plates (photographs)

- Below the photograph, type the word Plate followed by a space, the number of the plate, a space, a period, 5 spaces, and a sentence or two about the photograph. Then type the words Photo credit, followed by a colon, a space, the first and middle initials of the photographer, the photographer's last name, and a period.

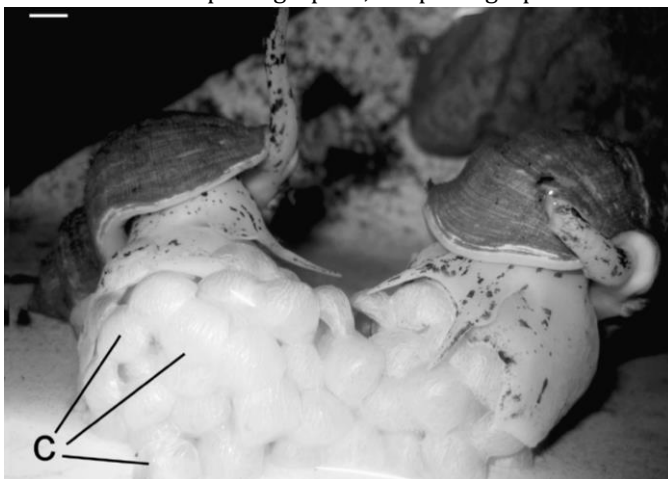


Plate 1. Female *Buccinum undatum* group laying an egg mass composed of multiple egg capsules (c) in December 2009. Each egg capsule contains between 500 and 2600 eggs. The scale bar represents 5 mm. Photo credit: K. E. Smith.

- Refer to the plate in the text by the word Plate and its number:

Females group to lay; each one produces between 80 and 150 egg capsules, which collectively create large egg masses containing up to thousands of capsules (see Plate 1). Maternal provisioning to each capsule increases with female size; larger females produce larger capsules.

See this plate and the text referring to it on page 2265 of this article:

Smith, K. E., and S. Thatje. 2013. The subtle intracapsular survival of the fittest: maternal investment, sibling conflict, or environmental effects? *Ecology* 94:2263–2274.